



3/6 Michele Rd CROMER, NSW



1



1



1

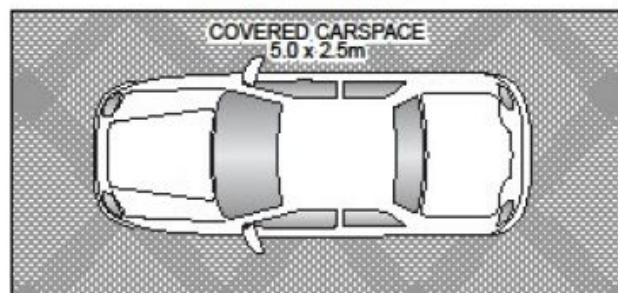
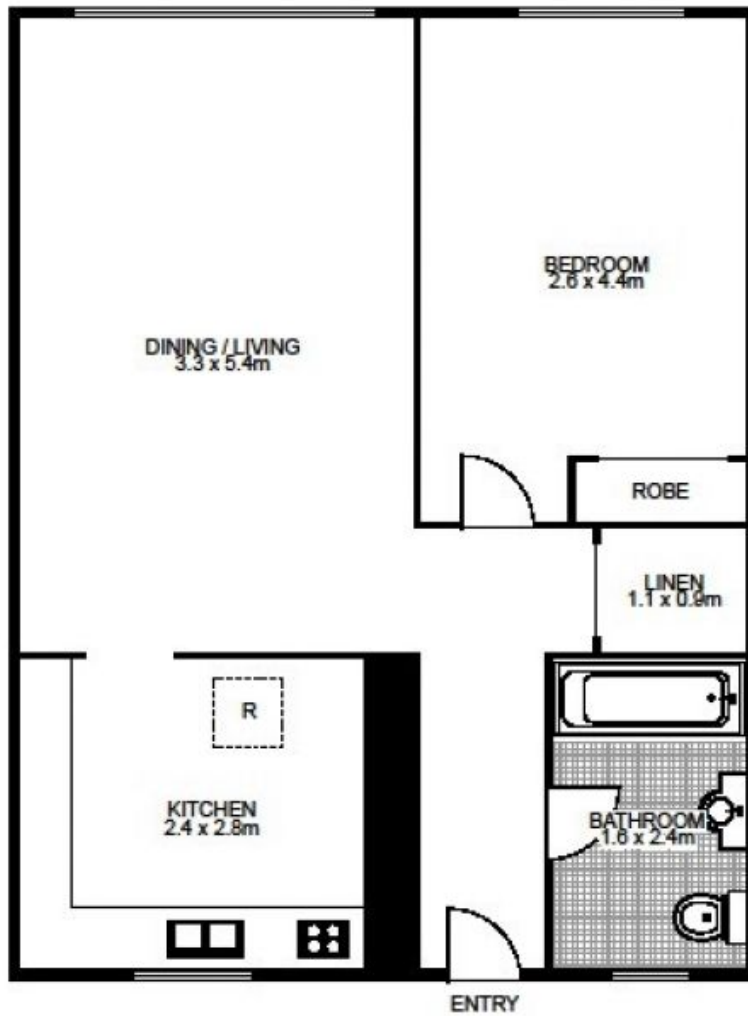
### 1 BEDROOM GROUND FLOOR APARTMENT, UNDER COVER PARKING, QUIET CUL -DE - SAC

Well presented, 47.2sqm, 1 bedroom ground floor apartment located at the end of a quiet cul-de-sac. Features include a bright living area overlooking the common garden, kitchen with gas cooking, instant gas hot water system and undercover parking.

The apartment is well presented with potential to update.  
Currently leased at \$410 per week.

COUNCIL RATES \$ 335.00 per quarter approximately  
WATER RATES \$172.00 per quarter approximately  
STRATA LEVIES \$ 706.00 per quarter approximately

**Marton Kaufmann**



3/6 Michele Road, CROMER

This floor plan is intended as a guide only. Layout dimensions are approximate only. No representations or warranties of any nature whatsoever are given or intended. Any person using this information should rely on their own enquiries. Floor Plans by SURROUNDPIX.

3/6 Michele Rd

CROMER, NSW